

HARON INTERNATIONAL PTY. LTD.

INSTRUCTIONS

HARON MODEL H794 CONCEALED CORNER JOINTS

For Corner Jointing of Timber and Laminated Board using 6, 8, or 10mm Fluted HARON Dowels.

1. Select the sides which will be on the outside after the joint is made - mark each joint with a letter on edge of board e.g. **A B** (as illustrated).(Fig.1)

2. Rotate Board 270° to under Board **B**.

3. Clamp the 2 boards together as shown (Fig.2)

4. Turn the dial on the jig to match the arrow and the thickness of the board. This will automatically position the holes to be drilled.

5. Position the jig to where the first dowel is to be positioned (Fig.3)

6. Set the depth stop on the Dowel Drill, care should be taken to ensure that the drilling depth is at least 4mm less than the board thickness, plus the thickness of the jig guide blocks 28mm.

Example:

For a board 22mm thick, the stop should be set at 46mm.

22mm **LESS** 4mm **PLUS** 28mm = 46mm

7. Drill by using the appropriate diam. drill to correspond with the board size being used.

Example:

Board thickness 10-16mm (Blue)	6mm Drill
Board thickness 17-23mm (Orange)	8mm Drill
Board thickness 24-30mm (Yellow)	10mm Drill

8. Drill 1 set of holes face and edge, release clamp and move to position of next set of holes and clamp, repeat as required. (Fig.3 & 4)

9. If the dowels used are longer than the total depth of the drilled holes, it is recommended to either cut the dowels or increase the depth of the hole, only where it is end drilled. (Not the hole on the face of the board).

10. Where the 2 boards have different thickness, proceed as above, but with the dial set to the thickness of the thinnest board to be used.

11. Fix HARON multi fluted dowels with PVA Adhesive for greater strength and firmly join the corners.(Fig. 5)

Fig. 1

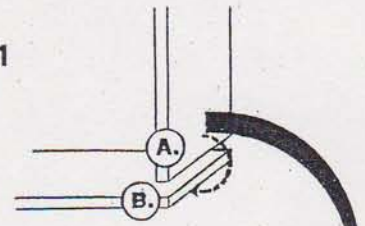


Fig. 2

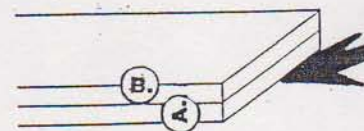


Fig. 3

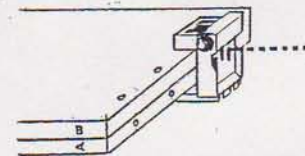


Fig. 4

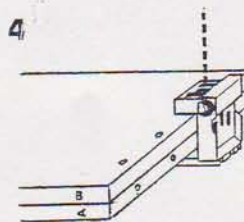
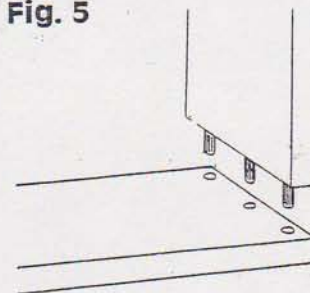


Fig. 5



FOR INSTRUCTIONS ON T BUTT SURFACE JOINTS - SEE OVER PAGE

WARRANTY CERTIFICATE

Item H794 Autodowel
Date of Purchase.....19..
Where purchased.....
.....

Purchaser:
.....
.....
.....

The guarantee is valid only if this Warranty Certificate is sent back together with proof of purchase such as Cash Sale Docket or Invoice.

The guarantee is valid for normal use for a period of Twelve months, provided the product has been used in accordance with the instructions.

HARON INTERNATIONAL PTY. LTD.
P.O. BOX 999, RINGWOOD 3134 VICTORIA
TEL: 03 870 9966 FAX: 03 870 9366

T BUTT JOINTS ON THE SURFACE

1. Mark joints with letters on board edges e.g., **C** and **D**. (Fig.1)

2. Place board **C** in a vice (or on a table with 2 clamps).

3. Set the dial to the mark corresponding to the thickness of board **C**.

4. At the place selected for the first dowel, position the jig as shown in Fig.2 using a wedge of the same thickness as board **C** (wedge shown by the letter **E** in the diagram). Tighten the clamp.

5. Insert the selected dowels in the holes in board **C**.

Draw a line on board **D** to mark the future position of board **C** (line shown by the letter **F** in Fig.3)

Position board **C** on board **D** as shown in the diagram.

6. Set the depth stop on the dowel drill, care should be taken to ensure that the drilling depth is at least 4mm less than the board thickness, plus the thickness of the jig guide blocks 34mm.

Example:

For a board 22mm thick, the stop should be set at 52mm.

22mm LESS 4mm PLUS 34mm = 52mm

7. **IMPORTANT: Now set the dial to the highest setting (16, 23, 30).**

As shown in Fig.5 place the jig flat against board **C** in such a way that the first dowel in position enters the jig's slot corresponding to its diameter. Check that the edges of boards **C** and **D** are perfectly flush against each other.

Slots on the end of the Dowelling Jig are designed to allow holes to be drilled in Board **D** that align correctly with the dowels positioned in end of Board **C**. Ensure correct slot is used for the dowel diameter being used.

8. **IMPORTANT: Each side of the jig's main guide block is marked with triangles each of which being related to a figure : 6 (1/4), 8 (5/16) or 10 (3/8).**

Slide together "board **C** + jig" so that the marking corresponding to dowels diameter be set up on the surface line **F** (see Fig.5)

Check that the edges of boards **C** and **D** have remained perfectly flush.

Clamp board **D** to board **C**, Drill.

9. Move the jig to the second dowel. Drill and go on.

Provided the directions for use have been correctly followed, all the holes in board **D** should be perfectly drilled along line **F** and connected with corresponding dowels of board **C**.

MANUFACTURED AND PATENTED BY TRIPLEX

Fig. 1

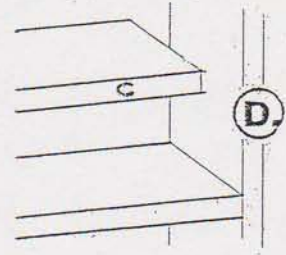


Fig. 2

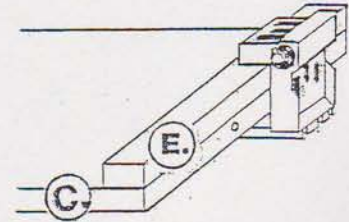


Fig. 3

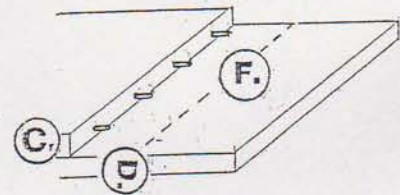


Fig. 4

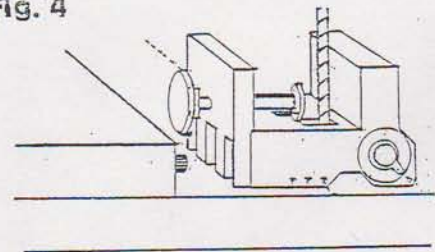


Fig. 5

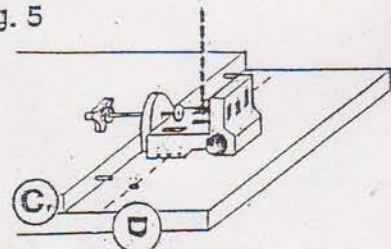


Fig. 6

